

:Arkitex Vantage

Newspaper publishing is becoming increasingly decentralized. Many newspaper publishers today outsource their printing workload to third party printing companies. Thus, printing and editorial sites can be located hundreds of miles from each other, or even across state or national borders.

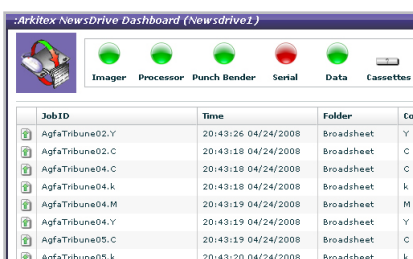
Providing users a single view of single or multiple :Arkitex workflow systems and their components, :Arkitex Vantage can be set up by internal IT system resources management as a vantage point to monitor pre-press production lines, and as a starting point for remote support interventions with instant feedback on overall system health, and an easy way to access each individual system component.

System Functionality

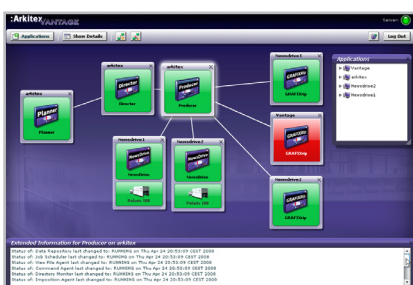
Server/client based, :Arkitex Vantage works with agents – small pieces of software running on each production system and making information available to the :Arkitex Vantage server. The server makes that information available to the client - a browser based interface showing the status of the production systems and providing access to additional, relevant information. The number of :Arkitex systems and modules shown by and accessible through :Arkitex Vantage, is based on user setting and can range from a few systems to a full, companywide overview, encompassing all production systems. Users can monitor and intervene in processes depending on the user permissions assigned to them.

:Arkitex Vantage functionality covers 4 key areas:

- **Monitoring the status of an application or device.** Status information includes ensuring that all necessary modules are running, that the application has not been paused (:Arkitex NewsDrive, :Arkitex Grafix RIP), and that sufficient disk space is available.
- **More detailed information about the application or device.** This includes information such as the jobs that are currently in process, which job(s) is currently imaging, and the status of all serial/data interfaces as well as processor and punch/bender. This added detail is typically shown in a dashboard display.
- **Quick access to the application's native web-based interface.** Users can quickly open :Arkitex Courier, Director, and Producer Client from :Arkitex Vantage.
- **Easy access of commonly used local applications:** e-mail or chat programs, browsers configured to open specific web sites, or even VNC connections to production machines to resolve issues highlighted by :Arkitex Vantage.



| JobID | Time | Folder | Col |
|-----------------|---------------------|------------|-----|
| AgfaTribune02.Y | 20:43:26 04/24/2008 | Broadsheet | Y |
| AgfaTribune02.C | 20:43:18 04/24/2008 | Broadsheet | C |
| AgfaTribune04.C | 20:43:18 04/24/2008 | Broadsheet | C |
| AgfaTribune04.k | 20:43:18 04/24/2008 | Broadsheet | k |
| AgfaTribune04.M | 20:43:19 04/24/2008 | Broadsheet | M |
| AgfaTribune04.Y | 20:43:19 04/24/2008 | Broadsheet | Y |
| AgfaTribune05.C | 20:43:19 04/24/2008 | Broadsheet | C |
| AgfaTribune05.k | 20:43:20 04/24/2008 | Broadsheet | k |



:Arkitex Vantage



Supported Applications

Each application listed below requires a single license. Unless specified otherwise, :Arkitex Vantage supports the applications listed below and does so by informing users of the status of the application module + the status of the platform on which that particular application is running.

| Module | Status Monitoring | Added Detail | One-Click Interface Access | Dashboard |
|------------------------------------|--|--------------|-----------------------------------|-----------|
| Director / Pair / Foundation | Each module, each platform | Yes | Director Client | Yes |
| Producer | Each module, each platform | Yes | Webmon | No |
| Courier | Each module, each platform | n.a. | Courier Client | No |
| NewsDrive | Each module, each platform Scan status | Yes | n.a. | Yes |
| GrafixRIP | Each module, each platform Imaging status | Yes | n.a. | No |
| Integrator / Lofviewer / TIFFProof | Each module, each platform | Yes | n.a. | No |
| Afirma | Afirma module, platform | n.a. | Afirma interface | No |
| Optlink | Each module, each platform | n.a. | Optlink interface | No |
| ITX | ITX module, ITX platform | n.a. | ITX interface | No |
| AutoPlan | AutoPlan module, Platform | Yes | AutoPlan configuration, interface | No |

*Director Dashboard

Director Dashboard provides information about the production state of the specific Director. The dashboard monitors the quantity of files processed by :Arkitex Director. Types of files monitored: Plans, Pages, Soft Proofs, and Controls (file formats: bcr, ecf, atm).

For each of these file types the dashboard shows:

- **New:**
How many new files of this type have arrived since the last update.
- **Processing:**
How many of these files are either processing or awaiting processing.
- **Out:**
How many of these files have completed processing since the last update.

Licensing

:Arkitex Vantage is licensed based on the number of applications and devices monitored.

System Requirements

The :Arkitex Vantage agent runs on a computer with a Windows based :Arkitex application. For as long as the platform meets the requirements of the application, it also meets the requirements of the agent.

Supported browsers:
Internet Explorer 6 or later and Firefox 2.X on Windows.
Safari 2.0.4 and Firefox 2.0.0.4 (or later) on Macintosh.

