

# :Arkitex Software Solutions

Agfa Graphics has a proven track record of delivering innovative quality solutions, specifically designed to meet and exceed the needs of newspaper production, supported with excellent customer service.

Through its membership of leading industry consortia, it has endeavored to make new technology available to a greater number of users. As such, Agfa Graphics is a founding member of the ICC colour management and the CIP4 committees. Agfa Graphics is above all a world leader in publishing workflow solutions, offering unique system-wide XML based solutions to manage and control extensive print communication projects.

:Arkitex originated in the world of newspaper prepress, addressing specific needs that required answers urgently to get the most out of the – then recently introduced – CtF and CtP breakthroughs.

Among these needs were separation tracking, versioning, load balancing to name just a few.

:Arkitex solved all of these issues long ago.

Meanwhile its functionality goes well beyond prepress, stretching all the way to the

- press room with :Arkitex AutoPlan, :Arkitex AutoInk, :Arkitex OptInk
- company-wide production management and control with :Arkitex Vantage
- file transmission with :Arkitex Courier
- reporting and resources analysis with :Arkitex Analyst.
- publisher with :Arkitex Portal, an online page production, softproof and approval workflow.

Three :Arkitex product families have been defined:

## :Arkitex Prepress

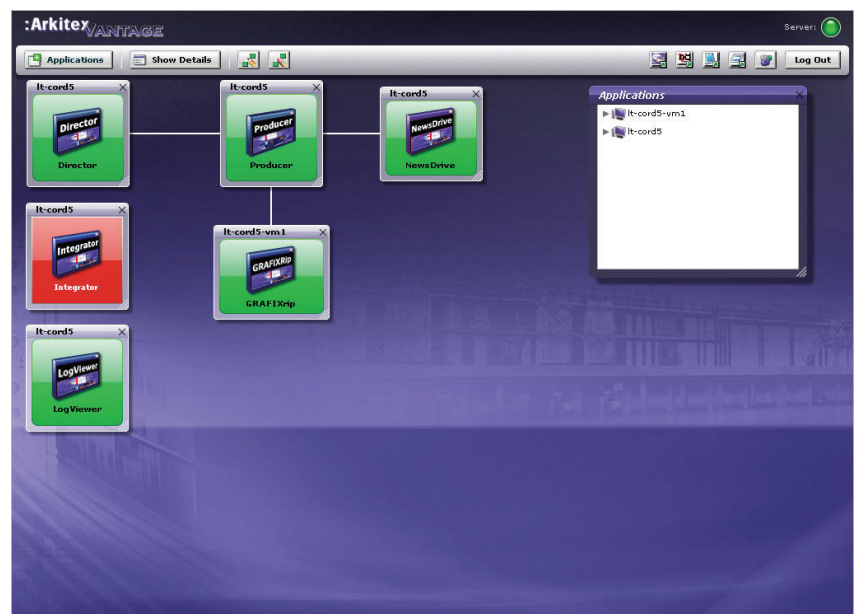
Data flow, page make-up, tracking, load balancing and data supply to output units and data storage.

## :Arkitex Enterprise

Data communication, system-wide production monitoring and reporting.

## :Arkitex Quality

Enhance quality through ICC-profile based batch handling of images from different sources, ink usage optimization and cross-modulated screening for photo-like image rendering.



## :Arkitex Prepress

### **:Arkitex Foundation.**

Provides basic task automation and workflow control, allowing users to begin the automation process one step at a time. Choice of several computer-to-film or computer-to-plate output configurations.

### **:Arkitex Producer.**

Helps busy operations stay productive by organising, prioritizing and routing pages to multiple RIPs, CtP units and proofers. :Arkitex Producer combines print spooling, OPI/PCI, queue management, image management, and automated output load balancing in one convenient package.

### **:Arkitex Director.**

The most advanced fully-featured system. It acts as a control centre for the entire workflow, automating complex tasks with ease, such as imposition to film or plate. Users can monitor production all the way to press and manually intervene if needed.

### **:Arkitex AutoPlan.**

An option with :Arkitex Director, :Arkitex AutoPlan automates planning processes for optimal productivity. It breaks down complex tasks into simple instructions, thus reducing errors and saving precious production time.

:Arkitex AutoPlan automatically sets-up editions, page counts, colours and plate positions in accordance with instructions supplied by the planning system or ad dummymy system.

### **:Arkitex Pair & Imposer.**

Eliminates unnecessary wait time by automatically tracking and pairing pages and imposing them into 2-, 4- and 8-up layouts. :Arkitex Pair does native pairing (2-up), whereas :Arkitex Imposer handles native 4-up and 8-up impositions.

### **:Arkitex Essentials.**

A simple to use, yet powerful workflow solution that matches the ease and convenience of Agfa Graphics' entry level newspaper CTP family. Containing the core :Arkitex workflow functionality, it offers all of the major workflow benefits with minimum investment.

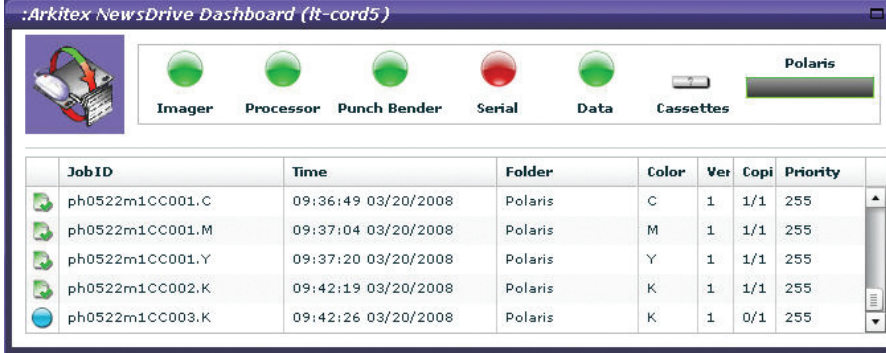
:Arkitex Essentials is available with the new generation of :Advantage N CtP units (except for :Advantage N-DL/N-TR) and :Palladio II and comes in different packages bringing limited or extended functionality

### **:Arkitex NewsDrive.**

Designed to drive Agfa output devices in an Agfa Graphics TIFF workflow, :Arkitex NewsDrive provides a reliable, high-speed processing interface, ensuring a seamless match with the printing operation.

### **:Arkitex NewsDrive X.**

Going well beyond TIFF buffers, :Arkitex NewsDrive X sends a steady stream of data to the imaging devices, providing the fastest plate making possible on existing equipment, to get the best return on investment from workflow. Allows full MAXML integration.



**:Arkitex NewsDrive Dashboard (It-cord5)**

Imager Processor Punch Bender Serial Data Cassettes **Polaris**

JobID	Time	Folder	Color	Ver	Copi	Priority
ph0522m1CC001.C	09:36:49 03/20/2008	Polaris	C	1	1/1	255
ph0522m1CC001.M	09:37:04 03/20/2008	Polaris	M	1	1/1	255
ph0522m1CC001.Y	09:37:20 03/20/2008	Polaris	Y	1	1/1	255
ph0522m1CC002.K	09:42:19 03/20/2008	Polaris	K	1	1/1	255
ph0522m1CC003.K	09:42:26 03/20/2008	Polaris	K	1	0/1	255

### **:Arkitex NewsDrive N.**

Designed to control the output of :Advantage N-M, :Advantage N-SA and :Advantage N-SL. Multiple scan-folders allow for priority to be given to different jobs. It also offers the ability to image single TIFF files, real-time text annotation, and the addition of multiple local printing marks.

### **:Arkitex GRAFIX RIP.**

A high-performance PostScript language interpreter to meet the demands of short-deadline colour production.

## **:Arkitex Enterprise**

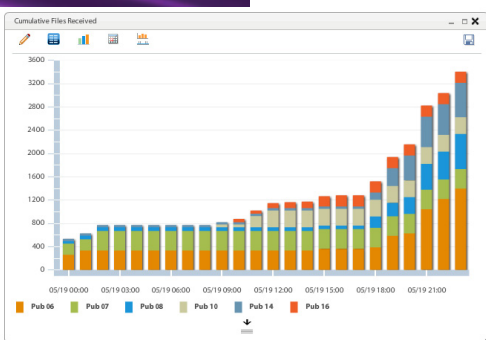
### **:Arkitex Courier.**

A page transmission solution that seamlessly integrates with any workflow system, while providing complete control over planning, management and tracking of critical files, :Arkitex Courier is completely file-format independent, for easy integration with a range of external planning systems. The system provides each authorized user with a full range of simple-to-use tools, allowing them to make real-time decisions to meet changing production needs.

### **:Arkitex Portal.**

:Arkitex Portal is designed to help printers boost their efficiency by closely integrating their customers – the publishers - into their production systems. This collaborative software system is designed for printers who currently accept pages from outside sources - for instance via ftp - or would like to start doing so in order to maximize their press usage.

:Arkitex Portal also allows printers to sell services - such as image optimization and pre-flighting - without increasing their workload. Moreover, newspaper publishers can use the system for streamlining their production by giving in-house editorial groups easy soft proofing and approval capabilities while limiting their access to production data.



### **:Arkitex Analyst.**

An enterprise-wide Tracking and Report system providing both real-time tracking information and post-production reports encompassing an entire newspaper production cycle eliminating the need to use complex reporting packages or to know SQL programming.

:Arkitex Analyst includes a number of standard report templates that define a basic report. From these templates, users then customize the report by changing settings. All settings are made using straightforward descriptions in human language instead of complex SQL queries.

### **:Arkitex Vantage.**

Providing users a single view of single or multiple :Arkitex workflow systems and their components, :Arkitex Vantage can be set up by internal IT system resources management as a vantage point to monitor pre-press production lines, and as a starting point for remote support interventions with instant feedback on overall system health, and an easy way to access each individual system component.

Server/client based, :Arkitex Vantage works with agents - small pieces of software running on each production system and making information available to the :Arkitex Vantage server. The server makes that information available to the client - a browser based interface showing the status of the production systems and providing access to additional, relevant information.



## :Arkitex Quality

### :Arkitex IntelliTune

:Arkitex IntelliTune provides enhanced image quality and consistency by automatically improving contrast and removing noise, so images look their best. This results in more defined details, realistic skin tones and improved clarity.

:Arkitex IntelliTune uses Multi-Dimensional Processing (MDP) to analyse the tone, colour and spatial characteristics of each image and automatically apply the necessary corrections for the best reproduction on press. There is an IntelliTune programme for Windows and for Mac.

### :Arkitex OptiInk

:Arkitex OptiInk draws on the use of Agfa Graphics patented ICC-compatible technology, such as Smart Input Space recognition (SISR) and Advanced Colour Management Module to ensure important ink savings on press, while at the same time improving print quality. Agfa's Smart Input Space Recognition (SISR) technology analyses incoming images - from both advertising and editorial - to determine the input profile. :Arkitex OptiInk automatically calculates the colour space and converts it to the specific newspaper press colour space, on which the run will print. The result is improved colour fidelity and more consistent ink coverage.

### :Arkitex Sublima XM

Cross-modulated (XM) screening technology lets users achieve photographic image reproduction on newsprint, with no extra effort on press or extra cost. Delivering detailed images up to 180 lpi, :Arkitex Sublima XM screening combines the benefits of AM (Amplitude Modulated) screening with the benefits of FM (Frequency Modulated). As the technology draws on reproduction of the smallest printable dot on each individual printing press it delivers bitmaps and plates for, it effectively eliminates the on-press problems associated with stochastic screening.

### TIFFProofX

TIFFProofX works as a fully automated colour proofing system suited for any newspaper workflow capable of producing standard TIFF files and for which there is a naming convention allowing for the different separations to be recognized.

It collects the separations from a single page and outputs the composite image to a proofer, or in a variety of file formats such as TIFF, PostScript/PDF, RTL, JPEG or PNG.

New Report

Report Type:

Product Summary

Filtered Page Flow

Complete Page Flow

Events

Bottleneck

Quota

Page Flow Trend

Table of number of plates needed, plates made, etc. by product for selected publication day

Product	Edition	Section	Press	Plates Pl	Plates M	Plates R	Ink (m2)
1K	---		G103	0	0	0	0
1K	---		H103	0	0	0	0
1K	---	A	G103	240	248	358	24.6211
1K	---	A	H103	176	176	262	13.0003
1K	---	M	C103	124	250	191	13.2416
1K	---	M	C104	124	250	189	12.6209
1K	---	M	C105	124	244	199	13.6554
1K	---	M	D106	240	432	360	24.6211

OK Cancel Help

