

SCREEN

# EQUIOS

---

## Universal Workflow

---



**EQUIOSNET**

Creating a Future in Print

**The right information to the right people at  
the right time with just the right number of copies**



**Your partner for next-generation printing solutions**

**EQUIOS**

### **Universal Workflow**

EQUIOS Universal Workflow is a workflow concept that allows operation from a single user interface to multiple/different types of devices. It integrates knowhow developed for prepress technology with various functions that make fully automated workflow and high-speed variable printing possible. EQUIOS is the new-generation workflow from Screen, which provides total support for both Print On Demand (POD) and CtP.



## CtP workflow

EQUIOS offers a fully automated prepress production workflow with user friendly operation. For example, EQUIOS Auto Ganging function automatically performs highly efficient imposition according to the page size, number of copies, and post-press processing. It also features flexibility of job management, making it possible to change the output device or replace page data at the last minute.



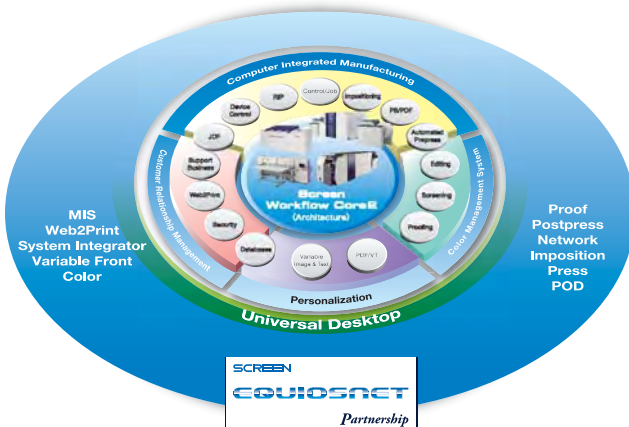
## High-speed variable printing

EQUIOS is equipped with various functions that accelerate processing speed, including RIP load balancing and caching of reusable objects and images. Thanks to its unique inspection system, it also provides the highest level of security in the full color variable printing business.



## Sheet-fed inkjet printing

EQUIOS enables precise color management to maximize high-quality reproduction using the latest inkjet technology. It collectively manages profiles for individual paper types to assure the best quality every time. It is also equipped with a specialized tool that adjusts CMYK colors as close as possible to spot colors.



### EQUIOSNET Partnership Program

The EQUIOSNET Partnership Program is Screen's strategic workflow collaboration scheme with various trusted major vendors. It accelerates end-to-end automation in print production and assures overall benefits.

### Communication with toner printers

EQUIOS can be used as your output centre for all your printing devices. Not only can it drive Screen's different products but it can also communicate with toner-based POD presses. EQUIOS enhances two-way communication by obtaining and managing paper information, transmitting instructions to printers, and acquiring information on printing progress and results. It further facilitates the handling of small-lot orders. By feeding back information to the MIS, EQUIOS also makes possible a more integrated production management system.

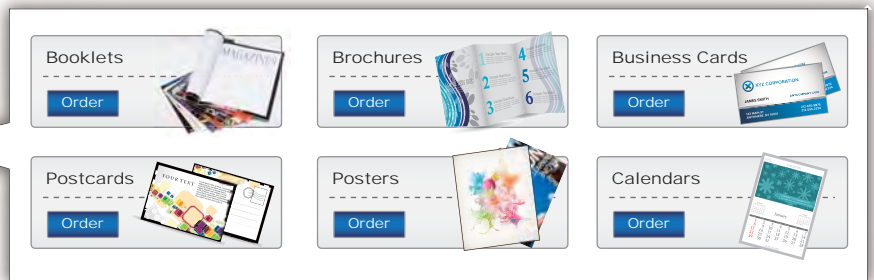
## Web to delivery automation

# Autoflow

The Autoflow concept underpins EQUIOS, which grew out of the integration of Screen's CtP and POD (Print On Demand) knowhow. Two factors are critical for improvement in prepress and press processes: efficient handling of highly specialized tasks and reduction of the number of operations. Autoflow realizes labor savings on the shop floor with smart operation that eliminates hesitation and repetition and a nonstop automation feature for all processes up to and including output.



Webshop with intuitive graphic order form



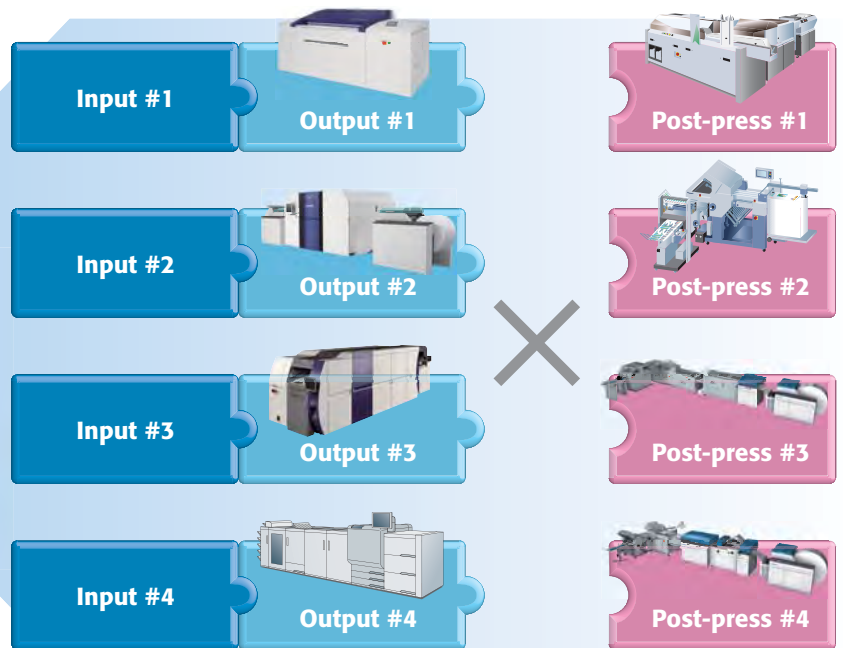
1. Customer-defined automation



**EQUIOS**

2. Name-defined automation

3. Data-defined automation



Action plans suitable for various output and Post-press devices

### EQUIOS Online: Remote desktop system

EQUIOS Online is an easy-to-use, online job submission, remote proofing and approval solution for EQUIOS. EQUIOS Online automates the overall production cycle, compensates for gaps between designer and print production and improves customer satisfaction. By using RIPed image by EQUIOS, every people concerned can see prepress result on their screen and easily find out differences between previous proof, avoiding errors and empowers the automation. Leveraging the power of the Internet, you are virtually open for business 24/7, anytime, anywhere.

---

## Inspection and reprinting automation

---

### 1. Customer-defined automation: Web2print drives overall production

EQUIOS intelligently offers the ultimate prepress automation. With EQUIOS, the entire printing process from color conversion and screening to printing and post-press processing can be automated by simple mouse clicking by the customer. The secret of this surprising automation is the embedded EQUIOS API(application program interface) used by Web2print systems. EQUIOS automatically selects

a preregistered Action Plan based on the order information a customer specifies via the Web2print systems, such as the number of copies, size, paper, and delivery period. JDF linking also keeps track of the operation status of individual devices and production management, contributing to improvements in throughput and overall efficiency.

### 2. Name-defined automation: File name rules for fully organized production

File name rules are Screen's proven method in prepress especially for automation of page assignment. Now EQUIOS creates more comprehensive and systematic automation utilizing file names. Once a job template, job name, or page number has been configured in the file name, simply input the data to EQUIOS. It will automatically register the file to an existing job or create a new job. Combining this function

with Data-defined automation enables automatic ticket selection after job creation and automatic performance of an entire series of processes, from job creation to input, output, and job backup. Through linkage with upstream systems, such as MIS and Web2Print, this realizes total production automation based on systematically generated file name operations.

### 3. Data-defined automation: Preflight technology is now not just for blocking errors

The key to dramatically increasing shop floor productivity is a function for automatic checking and automatic processing dependent upon input data conditions. EQUIOS comes with detailed output guidelines created with Screen's experience as an industry leading manufacturer of prepress

workflow systems (Trueflow). EQUIOS automatically issues error or warning notices or executes a preset process in accordance with the preflight results. Screen's extensive preflight knowledge helps to create a reliable workflow system, preventing possible errors and mistakes.

#### Action Plan

Action Plan is a set of tickets that defines input/output instructions and even JDF information for post-press devices. It can be saved as a template and re-used enable to non-stop automatic processing from color conversion to imposition, to RIPing process and even to automation in post-press processes.

EQUIOS integrates different printing parts as sections belonging to a single job, such as book with cover and magazines containing both

color and black-and-white pages, which simplifies the complicated order record and process management required for each print jobs. It is possible to assign multiple output tickets for each section. Eliminating the need to individually configure complex imposition or ticket settings for each output process contributes greatly to labor savings and automatic operation.

---

## Inspection and reprinting automation

Linking EQUIOS with the Truepress Jet520ZZ enables a wide variety of automated inspection functions. The inspection record which includes defect information, OCR text, and the results of decoding barcodes is sent back to the EQUIOS print management system and instructions can be sent back to the printer to initiate a reprint of defective pages.

The inspection records can all be saved to a CSV file, which allows these

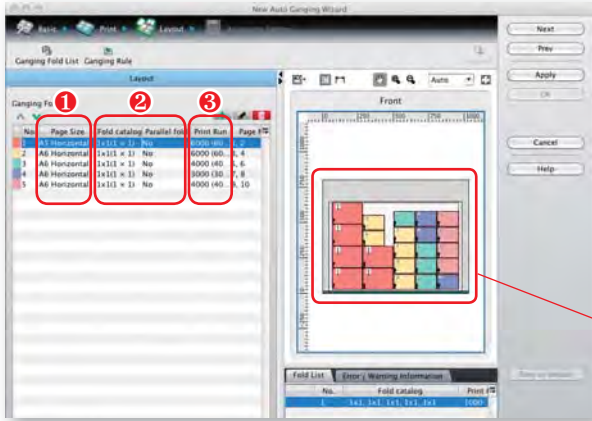
details to be used for communicating defects to the post-press systems. Before the media enters post-press processing, information is sent to the equipment's controller so that the defective pages can be rejected. Thanks to this link with the post-press equipment, it is possible to construct an integrated workflow.



**Screen's specialized knowledge produces high automation**

# Smart Imposition

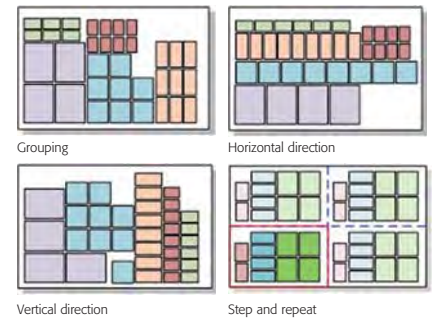
EQUIOS applies simplified, speedy operation with great flexibility to a variety of plate designs and production processes. A wide selection of fold catalogs supports complex imposition work and greatly increases process efficiency. Built-in flexibility enables quick confirmation and response at the page level to rapidly changing processes on the shop floor, including data submission, replacement, and final proofing.



**Auto Ganging: Increases printing efficiency for small jobs**

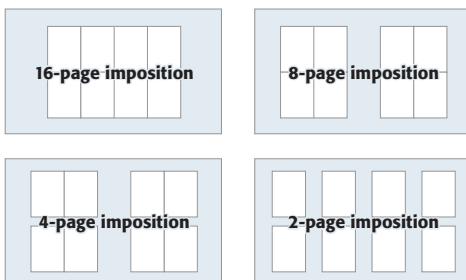
EQUIOS Auto Ganging automatically performs the most efficient ganging according to page size, signature settings, sheet grain direction, and number of copies. Intelligent plate design that takes into account details such as ease of cutting further increases productivity in small job printing.

- ① Page sizes
- ② Signature settings
- ③ Number of copies



**Auto-fit imposition scheme**

Multiple fold catalogs with differing page numbers can be set in advance in the imposition scheme template. Using this function enables automatic adjustment of signature combining according to the number of pages in each section. This allows a single imposition scheme template to be used for the imposition schemes for all page numbers.



For example, with a B1 printer (A4 x 8 pages, total of 16 pages front and back), if four types of fold catalog (16 pages x 1, 8 pages x 2, 4 pages x 4, 2 pages x 8) are preset, imposition schemes can be automatically created according to the total number of pages, as shown below.

<p><b>For 32 pages</b> 16 pages x 2</p>	<p><b>For 70 pages</b> 16 pages x 4 4 pages x 1 2 pages x 1</p>	<p><b>For 94 pages</b> 16 pages x 5 8 pages x 1 4 pages x 1 2 pages x 1</p>
---	---	---

**Variable imposition**

For the printing of invoices and statements, etc. that includes different numbers of individual personal records, a preset template is used and the number of pages is automatically increased to create an optimized imposition layout. Linking with post-press processing enables the construction of an automated line for variable printing jobs containing different numbers of pages.

**Improved post-press integration**

JDF folding/cutting information can be sent directly from EQUIOS to post-press processing devices. This naturally includes the ability to relay information via an MIS. Barcodes added to impositions, helps for various companies' post-press devices to prevent lost and misordered pages.

## Extending simplified operation to color management

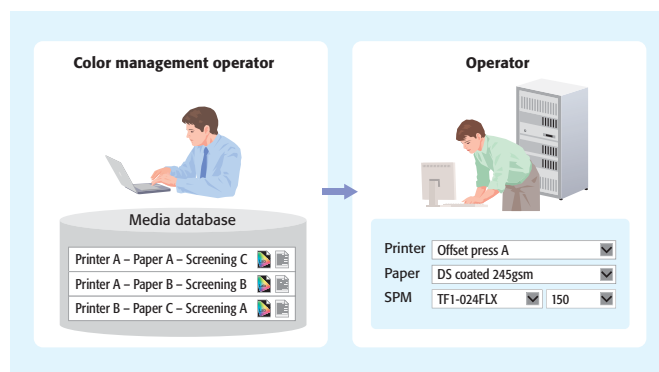
# Powerful CMS

EQUIOS is a new solution that is free from complex color management concerns. By making color management expertise available in a database, it maintains optimally consistent color reproduction, simplifies printing instructions, and avoids errors.

### Media database: For automation of specialist skills

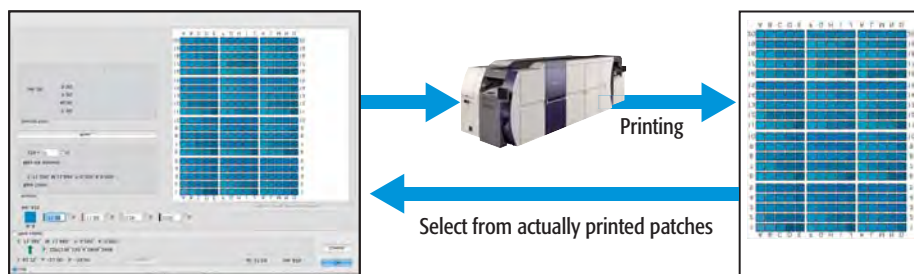
When the operator who issues printing instructions selects a printer and printing conditions (paper and screening), the latest, most optimal color conversion settings are automatically selected from a database. This simplified, accurate operation eliminates the need for the operator to be conscious of color management operations each time printing instructions are prepared.

Media database centrally manages printing conditions (printer, paper, CtP, and screening) and color management information (dot gain and ICC profile/device link profile). Using the expertise of a color manager to configure the Media database and separating color management settings from the printing operation are key to realizing error-free color management and efficient personnel utilization.



### Simplified creation of proxy colors for spot colors

With EQUIOS, a special adjustment function used when reproducing spot colors with process colors is installed as a standard feature. Even with logos and corporate colors requiring precise color matching, this function enables optimal color reproduction simply by selecting from different automatically generated and printed spot color patches.



# Variable data processing

### Smart Variable Data Processing

EQUIOS automatically recognizes reusable elements and assigns them to a background layer. The background layer can be output repeatedly without re-RIPing. This significantly improves processing speeds for large volumes of variable data, since only the variable data portion needs to be RIPed. Smart Variable Data Processing saves time and ensures the fastest possible output.

### Scalable Load Balancing maximizes productivity

EQUIOS features a scalable load balancing function designed to ensure optimal performance with the Truepress Jet520 and other connected engines. Large data volumes use large amounts of system resources, so load balancing is performed internally to derive maximum performance from the overall system. A system configuration can also be constructed specifically to match the type of work carried out by a customer.



## DAINIPPON SCREEN MFG. CO., LTD.

### HEAD OFFICE

\* Teranouchi-agaru 4-chome, Horikawa-dori, Kamigyō-ku, Kyoto, 602-8585 Japan/Phone +81-75-414-7610/Fax +81-75-414-7608

### DAINIPPON SCREEN GRAPHICS (USA), LLC

\* 5110 Tollview Dr., Rolling Meadows, IL 60008, USA/Phone +1-847-870-7400/Fax +1-847-870-0149 www.screenusa.com

### DAINIPPON SCREEN (DEUTSCHLAND) GmbH

\* Mündelheimer Weg 39, 40472 Düsseldorf, Germany/Phone +49-211-472701/Fax +49-211-4727199

### DAINIPPON SCREEN (U.K.) LTD.

\* Michigan Drive, Tongwell, Milton Keynes, Buckinghamshire MK15 8HT, UK/Phone +44-1908-848500/Fax +44-1908-848501 www.screen.co.uk

### DAINIPPON SCREEN (NEDERLAND) B.V.

\* Bouwerij 46, 1185 XX Amstelveen, Holland/Phone +31-20-4567805 www.screen-europe.com

### DAINIPPON SCREEN SINGAPORE PTE. LTD.

\* 29, Kaki Bukit View, Kaki Bukit Techpark II, Singapore 415963/Phone +65-6749-3833/Fax +65-6749-9010 www.screen-sp.com.sg

### DAINIPPON SCREEN (CHINA) LTD.

\* Room 2001 - 2003, 20/F Cable TV Tower 9 Hai Shing Road Tsuen Wan, N.T. Hong Kong/Phone +852-2953-0038/Fax +852-2755-8683

Beijing office/Phone +86-10-6708-9271, 9272, 9273/Fax +86-10-6708-9395

Shanghai office/Phone +86-21-3126-5122/Fax +86-21-5218-2199

Guangzhou office/Phone +86-20-3891-1112/Fax +86-20-3891-1036

### DAINIPPON SCREEN (TAIWAN) CO., LTD.

\* 4F No. 126-1, Ming Tsu West Rd., Taipei, Taiwan/Phone +886-2-25862711/Fax +886-2-25914367

### DAINIPPON SCREEN (KOREA) CO., LTD.

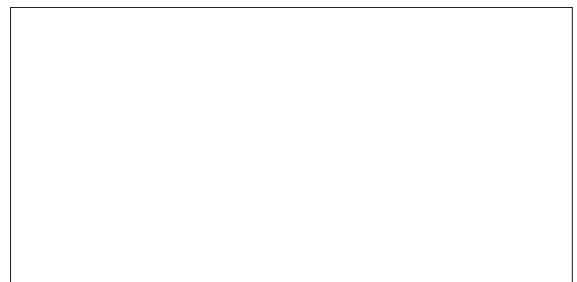
\* 10th Yonsei Bongsae B/D, 48-9, 1Ga, Bongsae-Dong, Joong-Gu, Seoul 100-161, Korea/Phone +82-2-7766-786/Fax +82-2-7766-787

### DAINIPPON SCREEN (AUSTRALIA) PTY. LTD.

\* Suite 11, 2 Eden, Park Drive, Macquarie, NSW2133, Australia/Phone +61-2-9016-3400/Fax +61-2-9016-3425

Internet web site : [www.screen.co.jp](http://www.screen.co.jp)  
[www.screenusa.com](http://www.screenusa.com)  
[www.screen-europe.com](http://www.screen-europe.com)

- This brochure was made using SPEKTA 2 screening.



We reserve the right to alter product design and specifications without prior notice.

No.202-193A Printed in Japan 04-12 020FSI(R1-1)