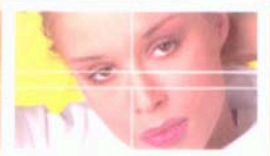


The Workflow

PolyRIP™ by TechNova®

A New Way to Work!



TechNova 

Complete Digital Workflow

PolyRIP™ is an Adobe® PostScript® 3™ RIP which runs under Windows® XP Professional on the industry-standard Intel® Pentium 4 platform. It handles even the most complex digital files and outputs them to a variety of imagesetters, inkjet printers, and plotters.

PolyRIP's interface embodies our workflow philosophy: first and foremost, it should be easy to use. It includes a variety of powerful, industry-leading features which are implemented in such a way that prepress operators will actually use them on a day-to-day basis. With PolyRIP's powerful tools, your prepress department can do more, and perform more efficiently — and that goes straight to your bottom line.

Custom Print Queues: What, How, Where and When

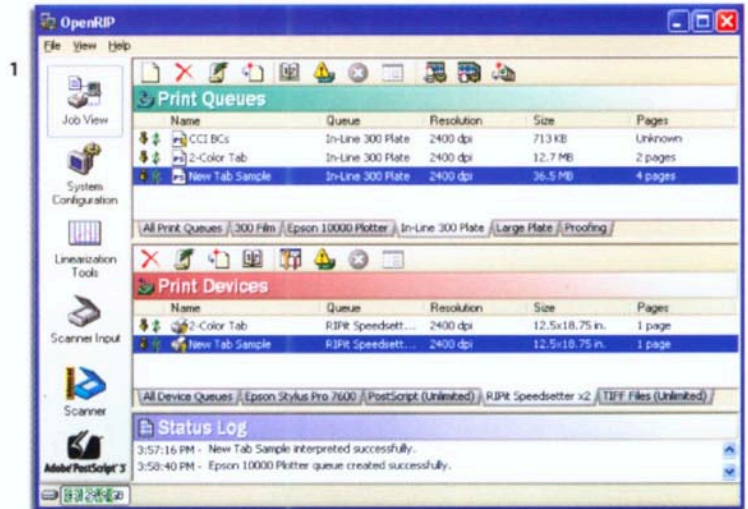
PolyRIP lets you customize your workflow by controlling output to match production needs with custom Print Queues. Print Queues¹ let you choose where the file is going, how the job will run and what press will run it. You can specify device and media, resolution, linescreen, trap amounts, linearization, dot gain compensation, color profiles and much more.

There are several options for sending jobs to PolyRIP:

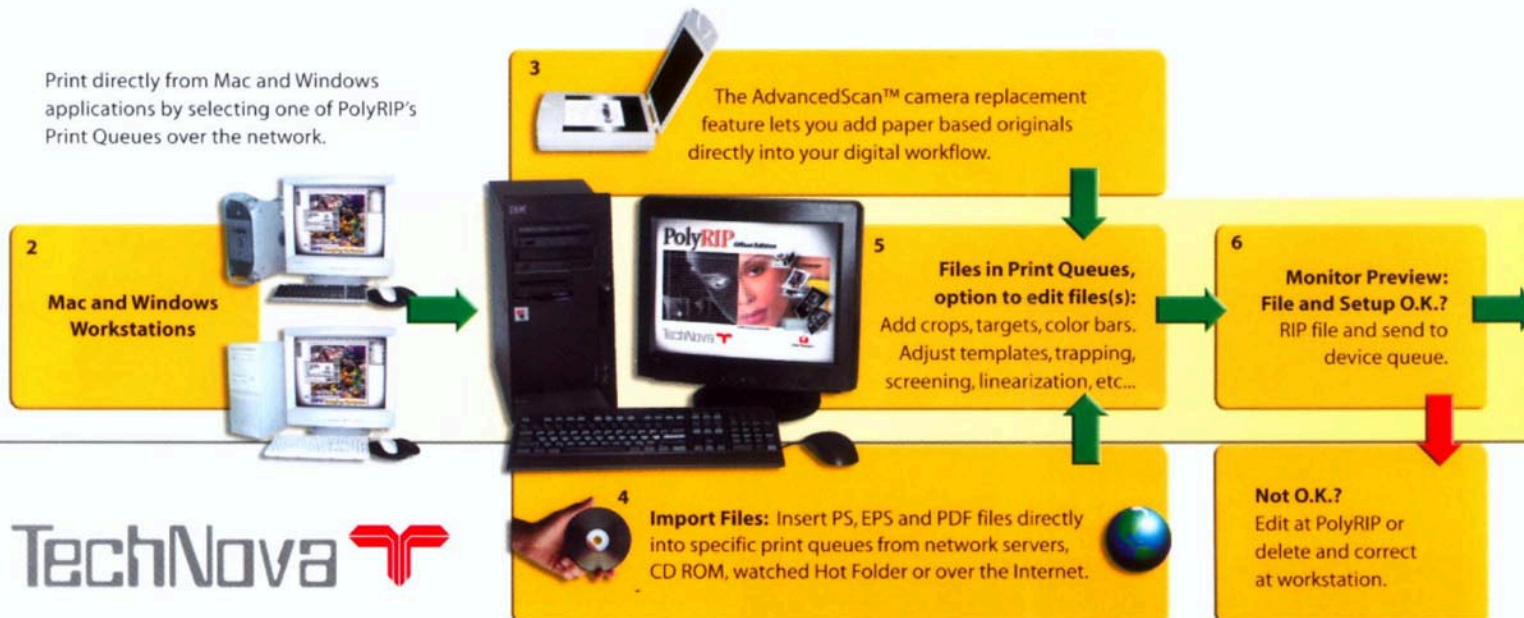
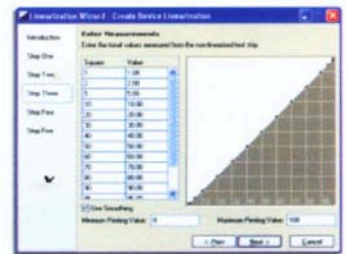
Print Queues appear on your network as network printers, so you can print to them as you would to any other printing device². With AdvancedScan, you can scan, edit and add paper-based originals³. You may also add PostScript, EPS, or PDF files, directly into PolyRIP with a PS Downloader, watched HotFolders, from CD ROM, or (using built in LPR support) print directly to PolyRIP via the Internet⁴.

Once a file is in a Print Queue, you can quickly edit and apply additional features⁵ for even more control of job setup and output.

Send a file to the wrong Print Queue? Simply Drag & Drop the file into another Print Queue to instantly change its output device.

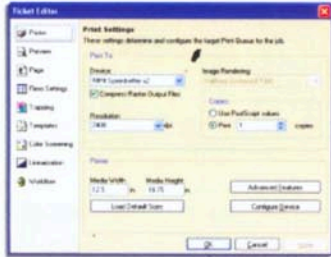


Control Your Image Quality:
PolyRIP's Linearization and dot gain compensation wizards take all the guesswork out of calibrating your CtP output device and presses.

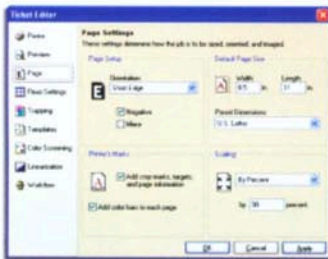


Let PolyRIP™ Do The Work!

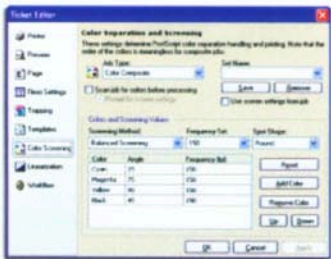
PolyRIP improves productivity and reduces human error by taking over many of the more tedious and error-prone prepress tasks. PolyRIP automates screening settings, trapping, plate templating, imposition (including crop marks, registration marks, color bars, and page information) and application of linearization and dot gain compensation. Once you've set up standard settings in PolyRIP, every job goes through the same workflow process, ensuring consistency throughout the production cycle⁵.



Change output devices and resolution on the fly!



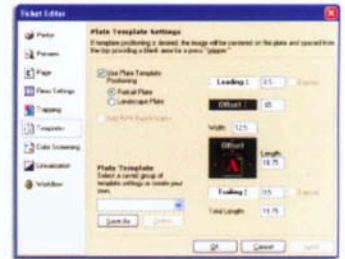
Select page orientation and image type, add crops, targets and color bars as they apply to each file and job type.



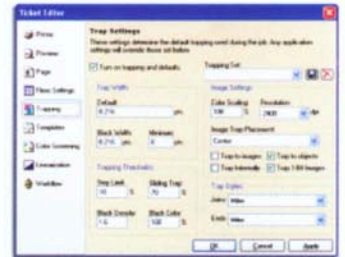
Choose Job Type, Screening Method, Frequency and Spot Shape.



Monitor Preview⁶ lets you check page elements such as fonts, links, crops, targets, traps, knockouts, overprints, imposition layouts and more. Check file colors in both composite (above) and separated modes (right), so you can catch problems before you waste time and valuable media.



Create plate templates to match specific presses. Choose format, gripper, leading edge, trailing edge and plate lengths. Save common templates to use over and over.



Don't waste time trapping files in front-end applications. In-RIP Trapping lets you quickly execute complex trapping commands directly from the RIP and check your trap settings with Monitor Preview (below).



PolyRIP Remote: Control raster files on PolyRIP remotely from MacOS-X and Windows workstations. Preview, impose and output.

7

Device Queue - File Rastered: Apply StripRITE Imposition, create low res PDF for raster file proof or output to devices for proofs, plates and film.



PDF Preview: Create a low res PDF of rastered files to preview on workstations or email for customer approvals

KOOLKolor™ Proofing: Print color-accurate proofs from a variety of inkjet printers and plotters⁸.

Output Devices: PolyRIP supports over 100 devices including inkjet printers, plotters, imagers and CTP platesetters⁹⁻¹².



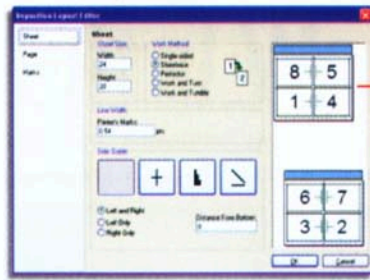
12

TIFF-out and PS-out Drivers: Use OpenRIP's features with a wide variety of output devices.

StripRITE™ Raster Imposition

The Raster Imposition Technology Engine (RITE) drives PolyRIP's raster imposition feature, StripRITE™. StripRITE allows you to generate spreads for books, step and repeat business cards, and perform other sophisticated imposition tasks quickly and easily.

Because the imposition takes place after the file is interpreted, it's more reliable and straightforward than ever before. Impose PS, EPS, PDF and Scanned pages in the same master layout, add or remove pages, combine / disable / enable individual colors, and much more.



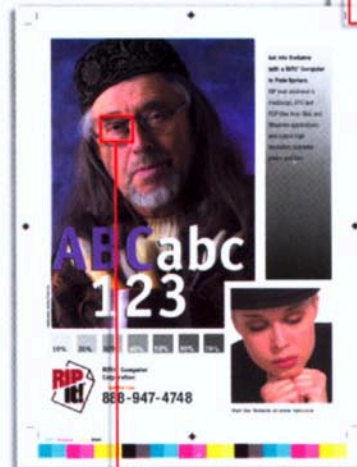
Select Bindery and Work Method:

Perfect bound, saddle stitch and step & repeat. Single sided, sheetwise, perfector, work & turn or work & tumble. Set page sizes and sheet sizes, gutters, bleeds and offset. Add crop marks, registration marks and color bars.



KOOLKolor™ Proofing

KOOLKolor™ Proofing lets you create color accurate proofs from a variety of inkjet printers and plotters. Choose from a variety of profiles to match proofing medias.



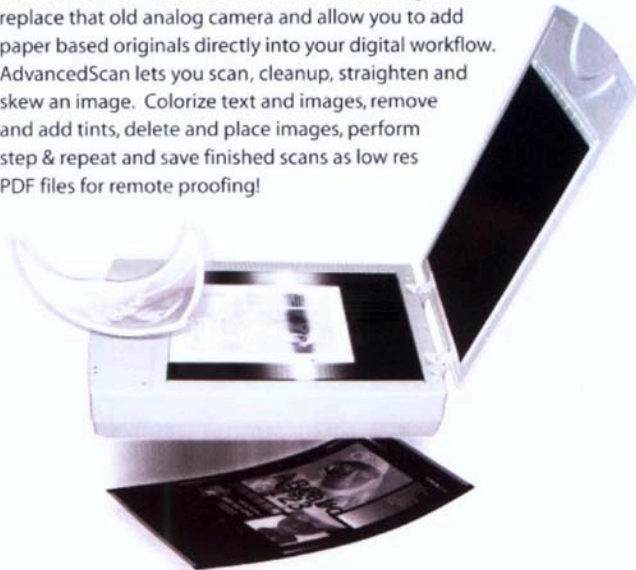
The Advanced Proofing feature lets you print any combination of colors in multi-color jobs for customer approvals and handy press proofs.



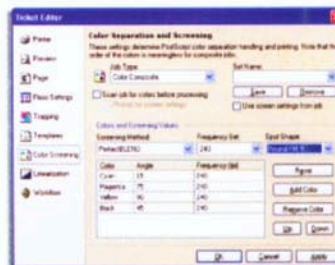
KoolToning™ halftone simulator provides traditional halftone dots on your inkjet proofs.

AdvancedScan™ Camera Replacement Software

AdvancedScan™ Scan to Plate feature was designed to replace that old analog camera and allow you to add paper based originals directly into your digital workflow. AdvancedScan lets you scan, cleanup, straighten and skew an image. Colorize text and images, remove and add tints, delete and place images, perform step & repeat and save finished scans as low res PDF files for remote proofing!



Screening Methods



OpenRIP offers a variety of screening solutions including: Adobe® Accurate Screens, Agfa® Balanced Screening and RIPit's PerfectBLEND™ Hybrid Screening. **PerfectBLEND Hybrid Screening** combines the benefits of traditional AM Screening and FM Screening for higher linescreens (up to 80% higher) without increased run difficulty.



TechNova

Corporate Office:
TechNova Imaging Systems (P) Limited
Laxmi Mills Estate
Off Dr. E. Moses Road
Mahalaxmi, Mumbai 400 011, India
Phone: +91 (0) 22 2498 3390
Fax: +91 (0) 22 2495 0322
email: corp@technovaworld.com
web: www.technovaworld.com

International Office
TechNova Imaging Systems (P) Limited
Unit 8a - Waverley Industrial Park
Hailsham Drive, Harrow, HA1 4TR Middelsex
United Kingdom
Phone: +44 (0) 20 8427 6662
Fax: +44 (0) 20 8427 1162
email: sg@technovaworld.co.uk
web: www.technovaworld.com