



HARLEQUIN^{PLUS} Server RIP (v8.3)

The Harlequin RIP continues to deliver key capabilities: performance, reliability, flexibility, excellent color quality, dependability and a rich feature-set for a variety of environments. The latest iteration - the Harlequin PLUS Server RIP (v8.3) - encompasses Global Graphics' next generation kernel technology, providing native PDF, PostScript® and XPS interpretation, and many 'workflow in a box'

prepress capabilities that are not always expected in a RIP including trapping, screening, proofing, color management, simple in-RIP imposition and font emulation. After nearly two decades, the descendents of the first Harlequin RIP continue to outpace the industry by offering an exemplary level of RIP performance.

All native, all of the time

The Harlequin PLUS Server RIP (v8.3) handles XPS, PDF & PostScript natively, without first converting to another format, resulting in faster, more accurate throughput. The RIP supports the following Page Description Languages (PDLs):

- PDF 1.7, including PDF/X-1a, PDF/X-3 and PDF/X-4
- PostScript Language Level 3
- XPS v1.0.

Color management & proofing

Available with the Harlequin RIP is Harlequin ColorPro™ which provides excellent color management, giving accurate, consistent and predictable color reproduction for a wide range of workflows including ICC profiles. Harlequin SetGold Pro™ is a utility for making high quality input and output profiles that are tightly integrated with the Harlequin RIP and optimizes the quality of the color output of the printing or proofing device. ProofReady™ plugins provide OEMs with the tools they need to deliver 'out of the box' color proofing. A Color Management Module (CMM) API also allows OEMs to easily add their own or third party color management.

NO NEED TO FLATTEN TRANSPARENCY

The Harlequin RIP has processed PostScript files natively since 1988 and PDF files natively since 1997, including rendering of live PDF transparency since 2002. It also processes XPS, the print and document format from Microsoft natively.

Screening

Global Graphics is at the forefront of leading edge screening techniques, holding extensive patents in screening technology. The Harlequin Screening Library™ (HSL™) is a collection of advanced screening techniques designed to resolve the quality issues faced by the pre-press and printing industry and includes our patented solution for high quality stochastic screening - Harlequin Dispersed Screening (HDS), as well as special screen sets developed specifically to support N-color applications and photo inks. Global Graphics' Harlequin Cross-modulated Screening (HXM) is a hybrid screen that builds on the best aspects of conventional and stochastic screening. A screening API also allows OEMs to easily plug in their own screening algorithms or a complete screening solution of their choice. Third party screening solutions such as Auraia from Hamillroad Software can also be used with the Harlequin PLUS Server RIP.

In-RIP trapping

Our best-in-class, powerful trapping solution, Harlequin TrapPro™, is the result of extensive internal development. This in-RIP trapping technology handles trapping automatically, as the page is processed in the prepress workflow.

Font Emulation

The Harlequin PLUS Server RIP (v8.3) has one of the most advanced font emulation capabilities on the market. Where there is a missing font, this feature can be switched on to make a typographically acceptable match with no text

NEW IN 8.3

Support for Windows 7 and Mac OS X 10.6 (Snow Leopard)

Expanded support for hybrid and digitally modulated screens

Support for PDF Retained Raster on more classes of device

overflow and, where character spacing, weight and width matches that of the missing source.

Simple Imposition

Simple Imposition is an optional in-RIP imposition capability which can be used for a bound work, N-up, cut & stack and step & repeat. Imposition management is accessed and edited easily through simple, graphical GUI controls accessed directly from the Page Setup dialog within the RIP.

JDF-enabled

Harlequin RIPs are JDF-enabled; they are able to process jobs passed to them from a JDF source. Harlequin PLUS Server RIP (v8.3) and is designed for compliance with level 2 of CIP4's base Interoperability Conformance specification (ICS). The Harlequin RIP Genesis Release (v7.1) was the first product to be officially CIP4 certified following testing by the Printing Industries of America./Graphic Arts Technical Foundation, against the Layout Creator to Imposition (LayCrlmp) ICS and Base ICS.

Harlequin PLUS Server RIP

FEATURES

| | |
|----------------------------|--|
| Color management | Harlequin ColorPro™ with enhanced GUI Support for RGB, CMYK, N-Color and gray ICC version 2 and 4 profiles Press/Proof Simulation Color management module (CMM) API |
| Output devices | Epson ProofReady™ plugin support (SWOP® certified on Mac OS 10.2.1 when used with Epson Stylus Pro 4000, SetGoldPro and Harlequin RIP Eclipse Release™ SP4) Harlequin 1bit and 2bit error diffusion screening (HEDS) SetGold™ on Windows for gray balance and ink limiting Optional proofing Plugins available for the following: Epson 3800, 4800, 4880, 7800, 7880, 9800, 9880, 11880 Hewlett-Packard Designjet Z2100, Designjet Z6100, Designjet T1100, Designjet 130 An output plugin API enables Global Graphics' OEM partners to write plugins for many output devices |
| Trapping | Harlequin TrapPro™ (optional) Trap Zone support with PDF files in TrapPro™ 6 |
| Input File Types | PDF 1.0, 1.1, 1.2, 1.3, 1.4, 1.5, 1.6, 1.7 TIFF/IT-PI (optional) PDF/X-1a:2003 & PDF/X-3:2003 HDPhoto PDF/X-1a:2001 & PDF/X-3:2002 JPEG, GIF PDF/X-4 JPEG2000 (with PDF 1.5 or greater) PostScript levels 1, 2 and 3 DCS and DCS 2 EPS JDF 1.1a, 1.2 and 1.3 XPS 1.0 |
| Output formats | <ul style="list-style-type: none">● TIFF, supporting separated and composite colour, screened and contone output● CIP3 for ink-key pre-setting (optional)● PDF wrapped raster for soft-proofing of the actual results from the RIP● TIFF/IT-PI (optional). |
| Network Protocols | TCP/IP AppleTalk® (Mac to OS X 10.5, PC to Windows Vista. Vista support requires 3rd party add-on) Windows® named pipe, Unix®-style sockets Serial |
| Supplied Fonts | Base 35 core Linotype Fonts (optional) |
| Font Support | PostScript Type 0, Type 1, Type 2 (CFF), Type 3, Type 4, Type 32, Type 42 (TrueType) CID fonts, including TrueType based 'New CID' OpenType and TrueType collections (.ttc) Morisawa Fonts CID/OCF (optional, requires license with Morisawa) Demand Loadable Fonts (DLD1) |
| Other font controls | User defined font substitution Font emulation Font rendering API |
| Calibration | Calibration, dot gain, tone curve controls Genlin™ Utility: auto-import of calibration values from the following devices: <ul style="list-style-type: none">● X-Rite 408, DTP41 series, DTP 32, DTP 12, 938, DTP34● GretagMacbeth Eye-One |

Harlequin PLUS Server RIP

FEATURES (continued)

Screening

Support for AM/FM screening tuned for a variety of devices:

- Renowned Harlequin Precision Screening™ (HPS)
- Harlequin Dispersed Screening™ (HDS). Patented FM/Stochastic screening (Optional)
- Harlequin Error Diffusion Screening™ (EDS) (Optional)
- Harlequin Cross-Modulated screening (HXM) (Optional)
- Screening API
- Third-party screening such as Auraia from Hamillroad Software

SYSTEM REQUIREMENTS

Windows XP, Vista, 7, Server 2003 and Server 2008

Processor: Pentium-based processor
Compatible with 32- and 64-bit operating systems (can access more RAM under 64-bit Windows)

Mac® OS X (10.4-10.6), Mac OS X Server (10.4-10.6)

Processor: PowerMac G3, G4, G5; IntelMac

All systems

Memory: 512MB

- Use of PDF Retained Raster requires additional RAM
- Processing speed will normally be greater with more RAM.

Hard drive: 4 GB free space (minimum)

Port: USB port for the Sentinel security dongle.

CD-ROM: CD-ROM drive for installing the Harlequin RIP

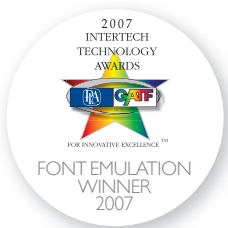
WHAT'S NEW IN HARLEQUIN EIGHT™

- Native processing of PDF 1.7 (in addition to previously available native support for PDF 1.6 through to PDF 1.0 and native processing of PostScript)
- Native PDF/X-4 support
- Native processing of XPS 1.0 files
- HD Photo support
- JDF compatible
- Significant performance increases:
 - Multi-threaded rendering that helps remove RIP bottlenecks in handling raster data and takes full advantage of the new Duo and Quad core technologies
 - PDF retained raster that speeds up variable data processing
 - Trapping up to eight times faster
 - Complex transparency performance enhanced
 - Spot colors fine-tuned
- Raster PDF output to facilitate soft proofing
- Compatible with Windows® Vista™ and Windows 7 (both 32- and 64-bit versions. Can access more RAM under 64-bit Windows)
- Compatible with MAC OS X 10.5 (Leopard) and 10.6 (Snow Leopard)
- Support for PANTONE® Goe™
- Extended support for hybrid and digitally modulated screens.

HARLEQUIN®
at heart



The Harlequin RIP
Genesis Release (v.7.1)
was the first product to be
JDF certified by CIP4.



IN ADDITION TO PREVIOUSLY AVAILABLE FEATURES INCLUDING:

- PostScript LL3 compatible (as well as LL1 and LL2)
- TIFF, JPEG, GIF
- Award winning in-RIP Font Emulation
- Two and four up and step & repeat in-RIP Simple Imposition
- In-RIP color management
- In-RIP trapping
- Cross platform.

For a full specification visit:

http://www.globalgraphics.com/products/harlequin_rip/specs.html

ONE OPEN ARCHITECTURE MANY PDL APPLICATIONS INFINITE OPPORTUNITIES

September 2010



the smarter alternative™
GLOBAL GRAPHICS®

www.globalgraphics.com

Global Graphics Software Inc.

31 Nagog Park, Suite 315, Acton
MA 01720, USA
Tel: +1-978-849-0011
Fax: +1-978-849-0012

Global Graphics Software Ltd

2nd Floor, Building 2030
Cambourne Business Park
Cambourne, Cambridge
CB23 6DW UK
Tel: +44 (0)1954 283100
Fax: +44 (0)1954 283101

Global Graphics KK

704 AIOS Toranomom Bldg.
1-6-12 Nishishimbashi, Minato-ku,
Tokyo 105-0003
Japan
Tel: +81-3-6273-3740
Fax: +81-3-6273-3741